

RYDBATT®

Company address :

SHENZHEN RYDER ELECTRONICS CO., LTD.

Building C,Huaming Industrial park,Huaming Road, Dalang,
Longhua,Shenzhen,Guangdong,China

Factory address :

HUIZHOU RYDER NEW ENERGY CO., LTD.

No. 16, Sanhe Avenue, Startling Area, China-Korea Huizhou Industrial
Park, Zhongkai District, Huizhou City, Guangdong Province, P. R. China

☎ TEL:0086-0752-5880937

✉ E-mail:sales@ryderbattery.com

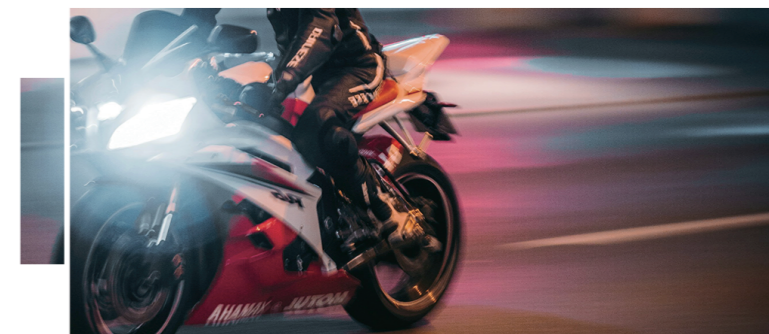
Website
<http://www.ryderelectronics.com>



RYDBATT®

LIGHTWEIGHT POWER BATTERY SOLUTIONS

www.ryderelectronics.com





RYDBATT®

Ryder established in July 2005, has been committed to pioneering R&D in lithium battery system integration and customized solutions. With two decades of accumulated technical expertise, our company has secured comprehensive proprietary intellectual property rights across core competencies, including system architecture design, Battery Management System (BMS) development, battery pack (PACK) engineering, power supply innovation, electronic circuitry design, software development, industrial design, and precision mold development. These technological achievements have validated by dual certifications as a National High-Tech Enterprise and a "Specialized, Sophisticated, Innovative and Distinctive" (SSID) SME, underscoring its industry leadership.

Strategically situated in Huizhou, the Ryder New Energy Industrial Park spans 50 acres (33,335 m²) with a total built-up area of 84,000 square meters. The facility comprises two state-of-the-art production plants totaling 45,000 m² and a dedicated 10,000 m² logistics warehouse, establishing a robust manufacturing ecosystem. Our company currently employs over 500 professionals, with R&D personnel constituting 12% of the workforce. Notably, core R&D team members possess over 15 years' specialized experience in power lithium battery engineering, driving continuous innovation and maintaining technological leadership in power lithium-ion batteries.

Our company operates ISO-certified laboratories and testing centers conduct full-spectrum validation protocols: safety compliance testing (UN38.3, UL), performance benchmarking, environmental simulation (-40°C to +85°C), application-specific stress testing, and accelerated lifecycle validation. This multi-layered quality assurance framework ensures zero-defect products with international standards. Ryder's product portfolio serves diverse mobility and energy sectors, including light electric vehicles (e-bikes, e-trikes, low-speed quadricycles), power tools, off-grid energy storage solutions, portable medical devices, and consumer electronics, earning global recognition and customer trust.



20

Years Experience In Battery



5000+

Successful Cases



500+

Green Energy Customers

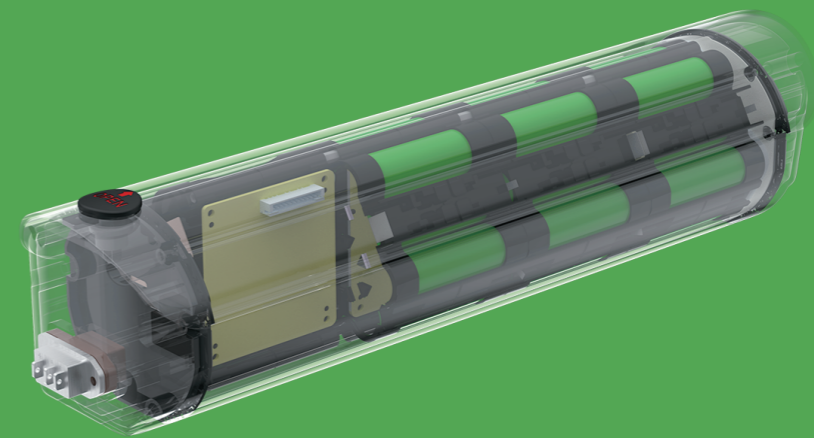


150+

Invention Patents

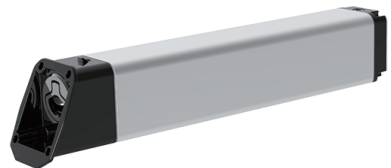
A light gray world map is centered in the background of the left panel.

RYDBATT®



ELECTRIC BICYCLE BATTERY SOLUTIONS

RYDB2505

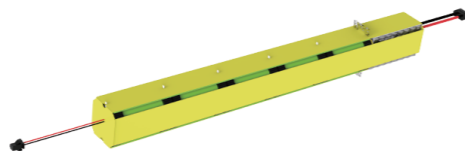


25V

5Ah

Configuration	7S2P
Material System	NCM/NCA
weight (kg)	1.3
IP Rating	IP65~IP67
Charging Temperature	5~45°C
Discharging Temperature	-20~60°C
Max.Continuous Charging Current	5A
Max.Continuous Discharging Current	35A
Working Voltage	18.2V~29.4V
Communication	UART/RS-485
Dimensions (L*W*H,mm)	65*42*7

RYDB3607-1



36V

7Ah

Configuration	10S2P
Material System	NCM/NCA
weight (kg)	1.15
IP Rating	IP65~IP67
Charging Temperature	5~45°C
Discharging Temperature	-20~60°C
Max.Continuous Charging Current	3.2A
Max.Continuous Discharging Current	15A
Working Voltage	27~42V
Communication	UART/RS-485
Dimensions (L*W*H,mm)	410* 43* 41

RYDB3607-2



36V

7.5Ah

Configuration	10S3P
Material System	NCM/NCA
weight (kg)	2.6
IP Rating	IP65~IP67
Charging Temperature	5~45°C
Discharging Temperature	-20~60°C
Max.Continuous Charging Current	4A
Max.Continuous Discharging Current	20A
Working Voltage	27.5~42V
Communication	UART/RS-485
Dimensions (L*W*H,mm)	360*265*80

RYDB3607-3



36V

7.8Ah

Configuration	10S3P
Material System	NCM/NCA
weight (kg)	2.6
IP Rating	IP65~IP67
Charging Temperature	5~45°C
Discharging Temperature	-20~60°C
Max.Continuous Charging Current	4A
Max.Continuous Discharging Current	20A
Working Voltage	27.5~42V
Communication	UART/RS-485
Dimensions (L*W*H,mm)	360* 265 *80



RYDB3607-4



36V

7.8Ah

Configuration	10S3P
Material System	NCM/NCA
weight (kg)	2.6
IP Rating	IP65~IP67
Charging Temperature	5~45°C
Discharging Temperature	-20~60°C
Max.Continuous Charging Current	3A
Max.Continuous Discharging Current	15A
Working Voltage	30~42V
Communication	UART/RS-485
Dimensions (L*W*H,mm)	368*90*94

RYDB3609

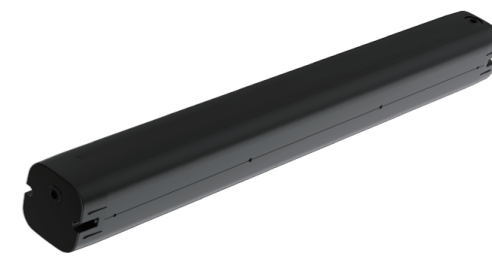


36V

9.6 Ah

Configuration	10S3P
Material System	NCM/NCA
weight (kg)	2.2
IP Rating	IP65~IP67
Charging Temperature	5~45°C
Discharging Temperature	-20~60°C
Max.Continuous Charging Current	3A
Max.Continuous Discharging Current	18A
Working Voltage	28V~42V
Communication	UART/RS-485
Dimensions (L*W*H,mm)	348*71*78

RYDB3610-1

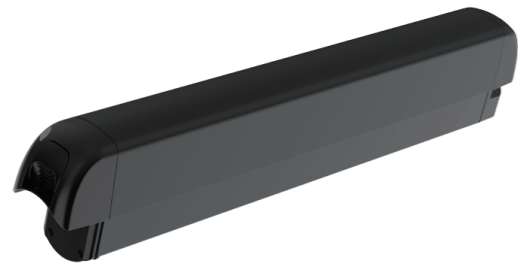


36V

10Ah

Configuration	10S2P
Material System	NCM/NCA
weight (kg)	1.9
IP Rating	IP65~IP67
Charging Temperature	5~45°C
Discharging Temperature	-20~60°C
Max.Continuous Charging Current	3A
Max.Continuous Discharging Current	15A
Working Voltage	27~42V
Communication	UART/RS-485
Dimensions (L*W*H,mm)	464*415*52

RYDB3610-2



36V

10Ah

Configuration	10S4P
Material System	NCM/NCA
weight (kg)	2.76
IP Rating	IP65~IP67
Charging Temperature	5~45°C
Discharging Temperature	-20~60°C
Max.Continuous Charging Current	3A
Max.Continuous Discharging Current	20A
Working Voltage	27.5V~42V
Communication	UART/RS-485
Dimensions (L*W*H,mm)	365*95.2*83

RYDB3610-3

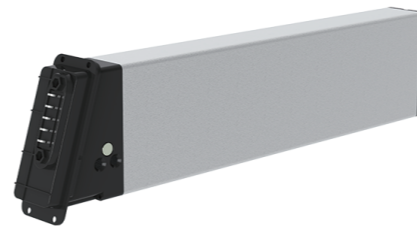


36V

10.2Ah

Configuration	10S4P
Material System	NCM/NCA
weight (kg)	3
IP Rating	IP65~IP67
Charging Temperature	5~45°C
Discharging Temperature	-20~60°C
Max.Continuous Charging Current	3A
Max.Continuous Discharging Current	20A
Working Voltage	30~42V
Communication	UART/RS-485
Dimensions (L*W*H,mm)	368 * 90 * 94

RYDB3612



36V

12.75Ah

Configuration	10S5P
Material System	NCM/NCA
weight (kg)	3.6
IP Rating	IP65~IP67
Charging Temperature	5~45°C
Discharging Temperature	-20~60°C
Max.Continuous Charging Current	3A
Max.Continuous Discharging Current	15A
Working Voltage	27.5~42V
Communication	UART/RS-485
Dimensions (L*W*H,mm)	432*107*49

RYDB3613



36V

13Ah

Configuration	10S5P
Material System	NCM/NCA
weight (kg)	3.4
IP Rating	IP65~IP67
Charging Temperature	5~45°C
Discharging Temperature	-20~60°C
Max.Continuous Charging Current	3A
Max.Continuous Discharging Current	15A
Working Voltage	28~42V
Communication	UART/RS-485
Dimensions (L*W*H,mm)	380*140*73



RYDB4812



48V 12.5Ah

Configuration	13S5P
Material System	NCM/NCA
weight (kg)	4.1
IP Rating	IP65~IP67
Charging Temperature	5~45°C
Discharging Temperature	-20~60°C
Max.Continuous Charging Current	2.5A
Max.Continuous Discharging Current	25A
Working Voltage	36.4~54.6V
Communication	UART/RS-485
Dimensions (L*W*H,mm)	371*161*61

RYDB4813-1



48V 13Ah

Configuration	13S5P
Material System	NCM/NCA
weight (kg)	4.32
IP Rating	IP65~IP67
Charging Temperature	5~45°C
Discharging Temperature	-20~60°C
Max.Continuous Charging Current	3A
Max.Continuous Discharging Current	25A
Working Voltage	39~54.6V
Communication	UART/RS-485/409*
Dimensions (L*W*H,mm)	9409*95*101

RYDB4813-2



48V 13Ah

Configuration	13S5P
Material System	NCM/NCA
weight (kg)	4.7
IP Rating	IP65~IP67
Charging Temperature	5~45°C
Discharging Temperature	-20~60°C
Max.Continuous Charging Current	2A
Max.Continuous Discharging Current	15A
Working Voltage	36.4~54.6V
Communication	UART/RS-485
Dimensions (L*W*H,mm)	487*68*97

RYDB4814-1

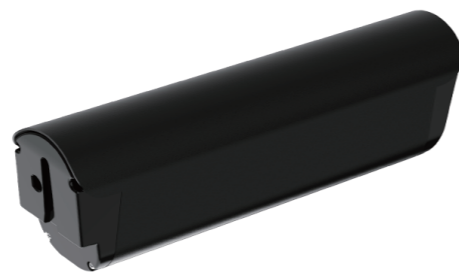


48V

14Ah

Configuration	13S4P
Material System	NCM/NCA
weight (kg)	3.98
IP Rating	IP67
Charging Temperature	5~45°C
Discharging Temperature	-20~60°C
Max.Continuous Charging Current	2.5A
Max.Continuous Discharging Current	15A
Working Voltage	39~54.6V
Communication	UART/RS-485
Dimensions (L*W*H,mm)	320*89*103

RYDB4814-2

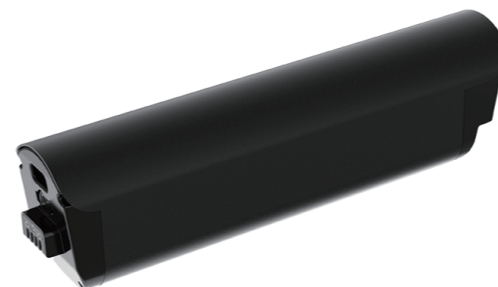


48V

14.4Ah

Configuration	13S3P
Material System	NCM/NCA
weight (kg)	3.6
IP Rating	IP67
Charging Temperature	5~45°C
Discharging Temperature	-20~60°C
Max.Continuous Charging Current	3A
Max.Continuous Discharging Current	25A
Working Voltage	35.1~54.6V
Communication	UART/RS-485
Dimensions (L*W*H,mm)	355* 102 * 75

RYDB4815-1



48V

15Ah

Configuration	13S3P
Material System	NCM/NCA
weight (kg)	3.6
IP Rating	IP65~IP67
Charging Temperature	5~45°C
Discharging Temperature	-20~60°C
Max.Continuous Charging Current	3A
Max.Continuous Discharging Current	25A
Working Voltage	35.1~54.6V
Communication	UART/RS-485
Dimensions (L*W*H,mm)	450 * 102 * 75

RYDB4815-2



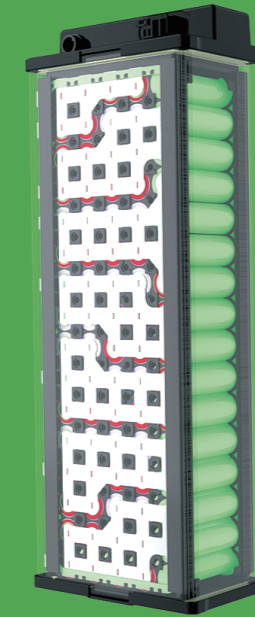
48V

15Ah

Configuration	13S3P
Material System	NCM/NCA
weight (kg)	3.8
IP Rating	IP67
Charging Temperature	5~45°C
Discharging Temperature	-20~60°C
Max.Continuous Charging Current	2A
Max.Continuous Discharging Current	15A
Working Voltage	35.1~54.6V
Communication	UART/RS-485
Dimensions (L*W*H,mm)	440*122*64

A light gray world map is centered in the background of the left half of the image.

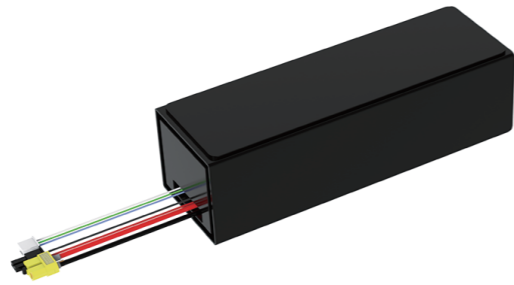
RYDBATT®



ELECTRIC SCOOTER BATTERY SOLUTION



RYDS3605



36V

5.2Ah

Configuration	10S2P
Material System	NCM/NCA
weight (kg)	1.2
IP Rating	IP65~IP67
Charging Temperature	5~45°C
Discharging Temperature	-20~60°C
Max.Continuous Charging Current	3A
Max.Continuous Discharging Current	15A
Working Voltage	28~42V
Communication	UART/RS-485
Dimensions (L*W*H,mm)	217*72*45

RYDS3606

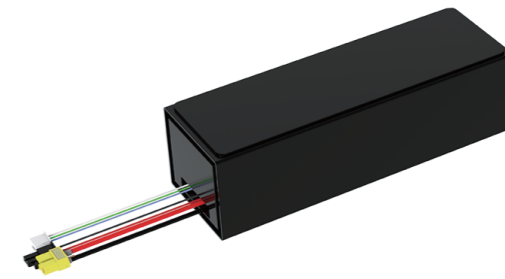


36V

6.4Ah

Configuration	10S2P
Material System	NCM/NCA
weight (kg)	1.5
IP Rating	IP65~IP67
Charging Temperature	5~45°C
Discharging Temperature	-20~60°C
Max.Continuous Charging Current	3A
Max.Continuous Discharging Current	12A
Working Voltage	27.0V~42.0V
Communication	UART/RS-485
Dimensions (L*W*H,mm)	Φ52*484

RYDS3607-1



36V

7.65Ah

Configuration	10S3P
Material System	NCM/NCA
weight (kg)	1.6
IP Rating	IP65~IP67
Charging Temperature	5~45°C
Discharging Temperature	-20~60°C
Max.Continuous Charging Current	3A
Max.Continuous Discharging Current	15A
Working Voltage	28V~42V
Communication	UART/RS-485
Dimensions (L*W*H,mm)	221*72*64



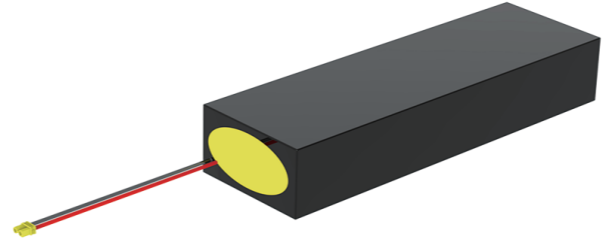
RYDS3607-2



36V **7.5Ah**

Configuration	10S3P
Material System	NCM/NCA
weight (kg)	1.45
IP Rating	IP65~IP67
Charging Temperature	5~45°C
Discharging Temperature	-20~60°C
Max.Continuous Charging Current	2.0A
Max.Continuous Discharging Current	2.0A
Working Voltage	36.5V ~42V
Communication	UART/RS-485
Dimensions (L*W*H,mm)	166*104*66

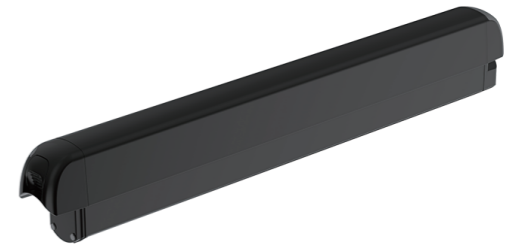
RYDS3610-1



36V **10.4Ah**

Configuration	10S4P
Material System	NCM/NCA
weight (kg)	2
IP Rating	IP65~IP67
Charging Temperature	5~45°C
Discharging Temperature	-20~60°C
Max.Continuous Charging Current	10A
Max.Continuous Discharging Current	15A
Working Voltage	28V~42V
Communication	UART/RS-485
Dimensions (L*W*H,mm)	285* 88*48

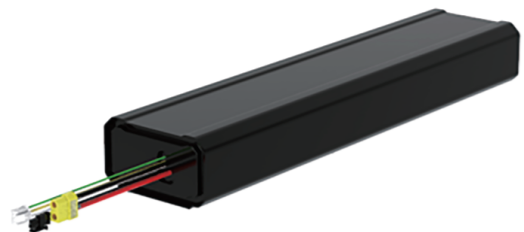
RYDS3610-2



36V **10Ah**

Configuration	10S4P
Material System	NCM/NCA
weight (kg)	2.9
IP Rating	IP65~IP67
Charging Temperature	5 ~ 45°C
Discharging Temperature	-20~60°C
Max.Continuous Charging Current	3A
Max.Continuous Discharging Current	20A
Working Voltage	27.5V~42V
Communication	UART/RS-485
Dimensions (L*W*H,mm)	465*93*51

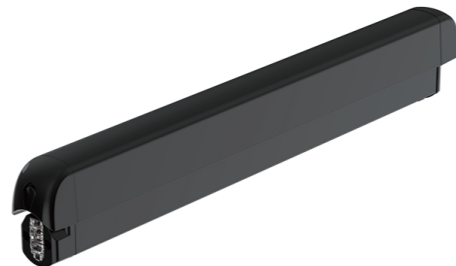
RYDS3610



36V 10.4Ah

Configuration	10S4P
Material System	NCM/NCA
weight (kg)	2.65
IP Rating	IP65~IP67
Charging Temperature	5~45°C
Discharging Temperature	-20~60°C
Max.Continuous Charging Current	3A
Max.Continuous Discharging Current	18A
Working Voltage	28V~42V
Communication	UART/RS-485
Dimensions (L*W*H,mm)	388*380*86.2*49

RYDS3612



36V 12.5Ah

Configuration	10S5P
Material System	NCM/NCA
weight (kg)	3.5
IP Rating	IP65~IP67
Charging Temperature	5~45°C
Discharging Temperature	-20~60°C
Max.Continuous Charging Current	3A
Max.Continuous Discharging Current	20A
Working Voltage	27.0V~42.0V
Communication	UART/RS-485
Dimensions (L*W*H,mm)	588*87*57

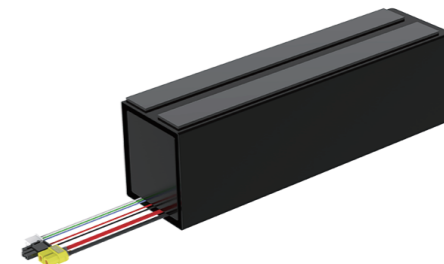
RYDS4809



48V 9.6Ah

Configuration	13S3P
Material System	NCM/NCA
weight (kg)	2.95
IP Rating	IP65~IP67
Charging Temperature	5~45°C
Discharging Temperature	-20~60°C
Max.Continuous Charging Current	3 A
Max.Continuous Discharging Current	20 A
Working Voltage	35.1V~54.6V
Communication	UART/RS-485
Dimensions (L*W*H,mm)	370*93*86

RYDS4810



48V 10.4Ah

Configuration	13S4P
Material System	NCM/NCA
weight (kg)	2.8
IP Rating	IP65~IP67
Charging Temperature	5~45°C
Discharging Temperature	-20~60°C
Max.Continuous Charging Current	3A
Max.Continuous Discharging Current	20A
Working Voltage	36.4~54.6V
Communication	UART/RS-485
Dimensions (L*W*H,mm)	273*81*72



RYDS4813



48V 13Ah

Configuration	13S5P
Material System	NCM/NCA
weight (kg)	3.5
IP Rating	IP65~IP67
Charging Temperature	5~45°C
Discharging Temperature	-20~60°C
Max.Continuous Charging Current	2.2A
Max.Continuous Discharging Current	25A
Working Voltage	35.75V~54.6V
Communication	UART/RS-485
Dimensions (L*W*H,mm)	270*107*72

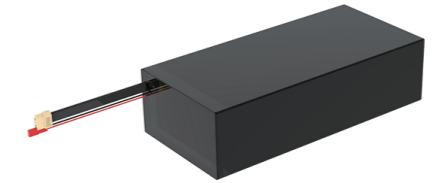
RYDS4815-1



48V 15Ah

Configuration	13S6P
Material System	NCM/NCA
weight (kg)	5.1
IP Rating	IP65~IP67
Charging Temperature	5~45°C
Discharging Temperature	-20~60°C
Max.Continuous Charging Current	3A
Max.Continuous Discharging Current	25A
Working Voltage	35.1V~54.6V
Communication	UART/RS-485
Dimensions (L*W*H,mm)	256*130*77

RYDS4815-2

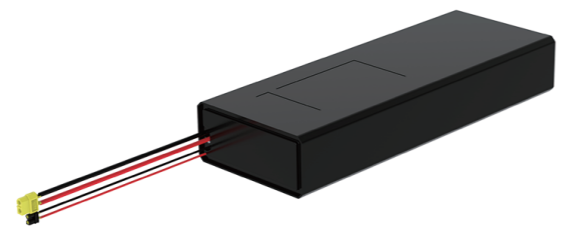


48V 15.6Ah

Configuration	13S6P
Material System	NCM/NCA
weight (kg)	3.850
IP Rating	IP65~IP67
Charging Temperature	5~45°C
Discharging Temperature	-20~60°C
Max.Continuous Charging Current	3A
Max.Continuous Discharging Current	27A
Working Voltage	36.4V~54.6V
Communication	UART/RS-485
Dimensions (L*W*H,mm)	272*126*72



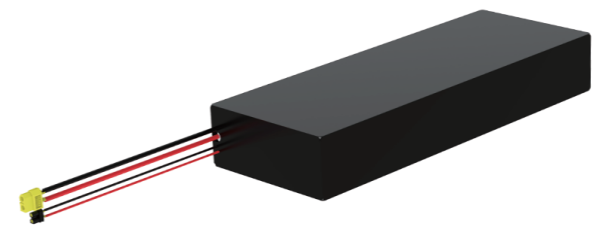
RYDS4815-3



48V **15.6Ah**

Configuration	13S6P
Material System	NCM/NCA
weight (kg)	3.1
IP Rating	IP65~IP67
Charging Temperature	5~45°C
Discharging Temperature	-20~60°C
Max.Continuous Charging Current	2A
Max.Continuous Discharging Current	20A
Working Voltage	36.4~54.6V
Communication	UART/RS-485
Dimensions (L*W*H,mm)	344*127*57

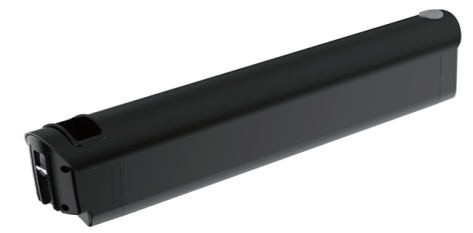
RYDS4815-4



48V **15.6Ah**

Configuration	13S6P
Material System	NCM/NCA
weight (kg)	3.9
IP Rating	IP65~IP67
Charging Temperature	5 ~ 45°C
Discharging Temperature	-20~60°C
Max.Continuous Charging Current	2A
Max.Continuous Discharging Current	20A
Working Voltage	36.4V~54.6V
Communication	UART/RS-485
Dimensions (L*W*H,mm)	272*127*72

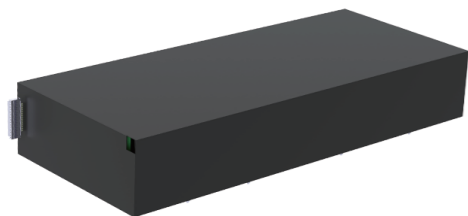
RYDS5009



50.4V **9.6Ah**

Configuration	14S3P
Material System	NCM/NCA
weight (kg)	3.14
IP Rating	IP65~IP67
Charging Temperature	5~45°C
Discharging Temperature	-20~60°C
Max.Continuous Charging Current	4.4 A
Max.Continuous Discharging Current	25 A
Working Voltage	39.2~58.8V
Communication	UART/RS-485
Dimensions (L*W*H,mm)	473*66*85

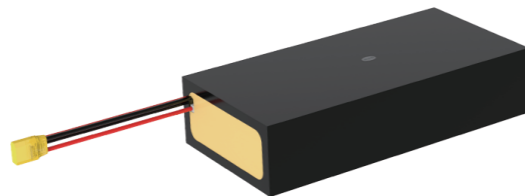
RYDS5018



52V 18.2Ah

Configuration	14S7P
Material System	NCM/NCA
weight (kg)	5
IP Rating	IP65~IP67
Charging Temperature	5~45°C
Discharging Temperature	-20~60°C
Max.Continuous Charging Current	3A
Max.Continuous Discharging Current	27A
Working Voltage	39.2V~58.8V
Communication	UART/RS-485
Dimensions (L*W*H,mm)	347*147*61

RYDS5020



52V 20.8Ah

Configuration	14S8P
Material System	NCM/NCA
weight (kg)	5.65
IP Rating	IP65~IP67
Charging Temperature	5~45°C
Discharging Temperature	-20~60°C
Max.Continuous Charging Current	5A
Max.Continuous Discharging Current	50A
Working Voltage	38.5V~58.8V
Communication	UART/RS-485
Dimensions (L*W*H,mm)	309*146*73

RYDS5223



52V 23.4Ah

Configuration	14S9P
Material System	NCM/NCA
weight (kg)	8.7
IP Rating	IP65~IP67
Charging Temperature	5~45°C
Discharging Temperature	-20~60°C
Max.Continuous Charging Current	10A
Max.Continuous Discharging Current	60A
Working Voltage	39.2V~58.8V
Communication	UART/RS-485
Dimensions (L*W*H,mm)	169*74*365

RYDS5735



57.6V 35.2Ah

Configuration	16S8P
Material System	NCM/NCA
weight (kg)	13.4
IP Rating	IP65~IP67
Charging Temperature	5~45°C
Discharging Temperature	-20~60°C
Max.Continuous Charging Current	10A
Max.Continuous Discharging Current	80A
Working Voltage	44.8V~67.2V
Communication	UART/RS-485
Dimensions (L*W*H,mm)	214*84*440



RYDS6020



60V 20Ah

Configuration	16S8P
Material System	NCM/NCA
weight (kg)	6.65
IP Rating	IP65~IP67
Charging Temperature	5~45°C
Discharging Temperature	-20~60°C
Max.Continuous Charging Current	3A
Max.Continuous Discharging Current	50A
Working Voltage	43.2V~67.2V
Communication	UART/RS-485
Dimensions (L*W*H,mm)	331*159*72

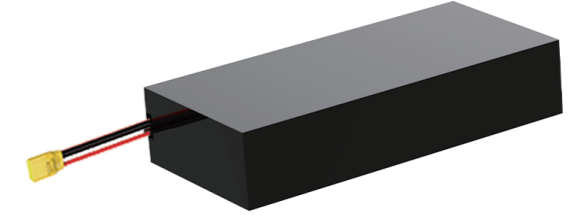
RYDS7235



72V 35Ah

Configuration	20S7P
Material System	NCM/NCA
weight (kg)	16.3
IP Rating	IP65~IP67
Charging Temperature	5~45°C
Discharging Temperature	-20~60°C
Max.Continuous Charging Current	10A
Max.Continuous Discharging Current	70A
Working Voltage	56V~84V
Communication	UART/RS-485
Dimensions (L*W*H,mm)	415*198*82

RYDS7245

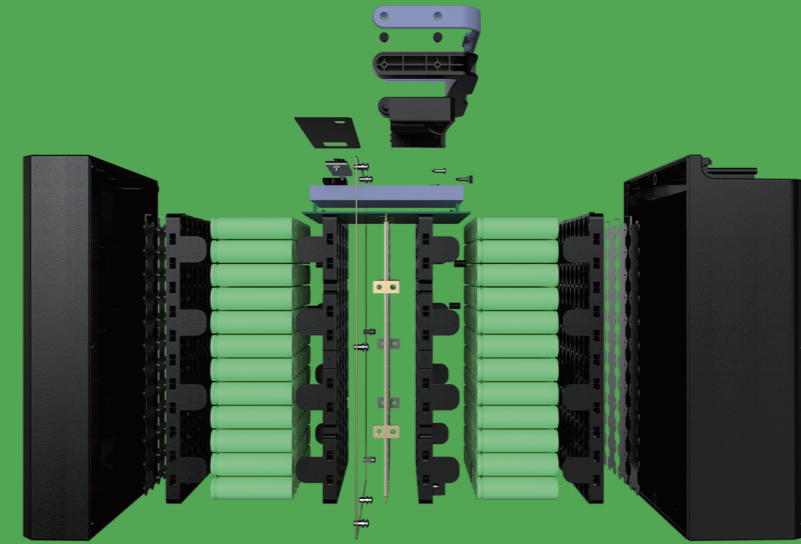


72V 45Ah

Configuration	20S9P
Material System	NCM/NCA
weight (kg)	17.5
IP Rating	IP65~IP67
Charging Temperature	5 ~ 45°C
Discharging Temperature	-20~60°C
Max.Continuous Charging Current	10A
Max.Continuous Discharging Current	130A
Working Voltage	56.0V~84V
Communication	UART/RS-485
Dimensions (L*W*H,mm)	423*203*89

A light gray world map is centered in the background of the left panel.

RYDBATT®



ELECTRIC MOTORCYCLE BATTERY SOLUTION

RYDM4820



48V 20.8Ah

Configuration	13S8P
Material System	NMC/LFP
weight (kg)	8.6
IP Rating	IP65~IP68
Charging Temperature	5~45°C
Discharging Temperature	-20~60°C
Max.Continuous Charging Current	10A
Max.Continuous Discharging Current	40A
Working Voltage	35.1~54.6V
Communication	RS-485/CAN
Dimensions (L*W*H,mm)	300*90*150

RYDM6040-1



60V 40Ah

Configuration	17S9P
Material System	NMC/LFP
weight (kg)	18.5
IP Rating	IP65~IP68
Charging Temperature	5~45°C
Discharging Temperature	-20~60°C
Max.Continuous Charging Current	10A
Max.Continuous Discharging Current	50A
Working Voltage	47.6~71.0V
Communication	RS-485/CAN
Dimensions (L*W*H,mm)	167*217*336

RYDM6040-2



60V 40Ah

Configuration	17S16P
Material System	NMC/LFP
weight (kg)	18.5
IP Rating	IP65~IP68
Charging Temperature	5~45°C
Discharging Temperature	-20~60°C
Max.Continuous Charging Current	10A
Max.Continuous Discharging Current	50A
Working Voltage	47.6~71.0V
Communication	RS-485/CAN
Dimensions (L*W*H,mm)	166*216*335

RYDM6228



62V 28Ah

Configuration	17S11P
Material System	NMC/LFP
weight (kg)	13
IP Rating	IP65~IP68
Charging Temperature	5~45°C
Discharging Temperature	-20~60°C
Max.Continuous Charging Current	10A
Max.Continuous Discharging Current	40A
Working Voltage	51~71V
Communication	RS-485/CAN
Dimensions (L*W*H,mm)	215*80*420



RYDM7232-1



72V

32Ah

Configuration	20S8P
Material System	NMC/LFP
weight (kg)	19.5
IP Rating	IP65~IP68
Charging Temperature	5~45°C
Discharging Temperature	-20~60°C
Max.Continuous Charging Current	10A
Max.Continuous Discharging Current	60A
Working Voltage	56~84V
Communication	RS-485/CAN
Dimensions (L*W*H,mm)	430*235*90

RYDM7232-2



72V

32Ah

Configuration	20S12P
Material System	NMC/LFP
weight (kg)	18.1
IP Rating	IP65~IP68
Charging Temperature	5~45°C
Discharging Temperature	-20~60°C
Max.Continuous Charging Current	10A
Max.Continuous Discharging Current	60A
Working Voltage	56.0~84.0V
Communication	RS-485/CAN
Dimensions (L*W*H,mm)	430*235*90

RYDM7245



72V

45Ah

Configuration	20S3P
Material System	NMC/LFP
weight (kg)	33
IP Rating	IP65~IP68
Charging Temperature	5~45°C
Discharging Temperature	-20~60°C
Max.Continuous Charging Current	10A
Max.Continuous Discharging Current	80A
Working Voltage	59.8~80V
Communication	RS-485/CAN
Dimensions (L*W*H,mm)	261*158*413



RYDM7240



72V 40Ah

Configuration	20S8P
Material System	NMC/LFP
weight (kg)	16
IP Rating	IP65~IP68
Charging Temperature	5~45°C
Discharging Temperature	-20~60°C
Max.Continuous Charging Current	15A
Max.Continuous Discharging Current	80A160A(30s)
Working Voltage	60~83V
Communication	RS-485/CAN
Dimensions (L*W*H,mm)	203*163*340

RYDM7250



72V 50Ah

Configuration	20S10P
Material System	NMC/LFP
weight (kg)	18
IP Rating	IP65~IP68
Charging Temperature	5~45°C
Discharging Temperature	-20~60°C
Max.Continuous Charging Current	0.5C
Max.Continuous Discharging Current	150A 250A(30s)
Working Voltage	60~83V
Communication	RS-485/CAN
Dimensions (L*W*H,mm)	228*163*340